

END WHEEL POWER PRESS

Open Front . . . with motorised drive

MODEL 80B

Ideal for punching, blanking, shearing and forming operations, this rugged press will prove an asset where work in the heavier gauges of material is contemplated. Its balanced design, blending components of ap-

propriate strength with a frame of utmost rigidity, ensures a minimum deflection under full load. The massive frame is a one-piece casting in best fine grained semi-steel and is designed to accommodate a pneumatic die cushion which can be furnished upon request.

The crankshaft, which is of eccentric type, is machined from a high tensile steel forging, precision ground, and is carried in large diameter sleeved bearings; whilst the one-piece style connecting rod is a steel casting with phosphor bronze bushing, and incorporates a treated steel ball-end connecting screw of special buttress thread form. The heavy fly-wheel is machined all over and mounted on ball and roller bearings enclosed in a sealed grease chamber, resulting in a smooth running wheel.

Extra long, accurately hand scraped gibs on slide ensure correct alignment of punch and die and increase tool life. Ejection is of positive bar type adjustable at front of press. The slide has a flanged base providing generous face area for support of large tools and is furnished with punch-holder and additional fixing holes. The removable semi-steel bolster plate is of heavy section and has a series of machined tee-slots allowing for secure fastening of a wide variety of dies.

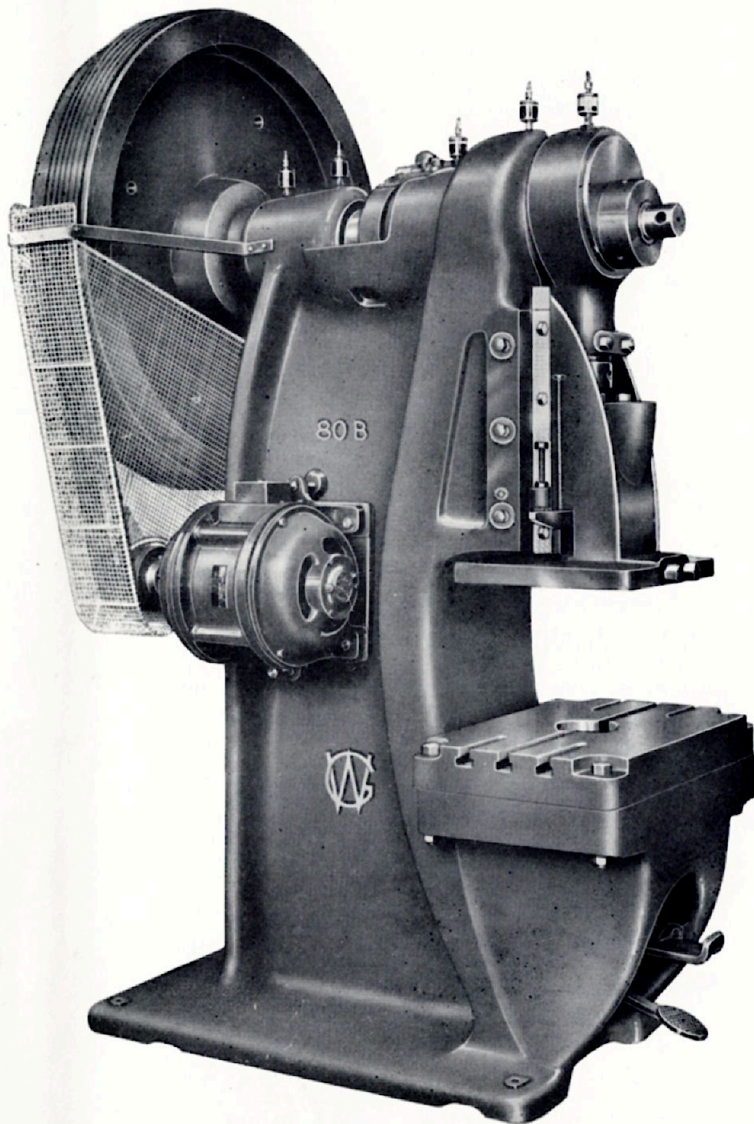
Operation of press is through a three-way hardened steel clutch ring and key, providing a quick and positive action, these parts being hardness tested and ground to close tolerances. Depression and release of the treadle allows machine to make one stroke and return to top centre. A treadle guard is a standard feature.

Lubrication is of centralised type by means of a hand-operated oil pump (proprietary systems are fitted), feeding main journals, connecting rod and slide gibways. Other points are provided with grease fittings.

Electric motor drive is employed, the motor being adjustably mounted on side of press and a guard of wire mesh pattern fitted over the vee-belt drive. No starter or switchgear is supplied with the machine.

All presses are built to Schlesinger limits of accuracy, and are tested under working conditions, prior to final inspection before leaving factory.

Leading dimensions overleaf.



W. G. GOETZ & SONS LTD., Spotswood, Melbourne. MW 7695-6-7. Telegrams "Getzsos"

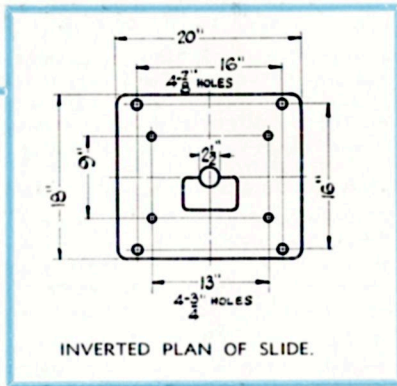
Representatives : Sydney, Brisbane, Adelaide, Perth, New Zealand — GOLLIN & CO. LTD.

MODEL 80B

END WHEEL POWER PRESS Open Front . . . with motorised drive

SPECIFICATIONS

| | |
|---|---------------------------------------|
| Capacity—pressure exerted at bottom of stroke | 80 tons |
| Standard stroke of slide | 4" |
| Adjustment of slide | Up to 2 $\frac{3}{4}$ " |
| Die space—bolster to slide with stroke down adjustment up | 11" |
| Distance from centre of slide to frame | 10 $\frac{1}{2}$ " |
| Area of bolster plate F to B x R to L x thickness | 20" x 32" x 4" |
| Standard hole in bolster plate | 6 $\frac{1}{2}$ " dia. |
| Bore of slide for punch shanks, dia. x depth | 2 $\frac{1}{2}$ " x 2 $\frac{1}{2}$ " |
| Standard opening in bed F to B x R to L | 12" x 15" |
| Dia. of intersecting circle in bed | 14 $\frac{1}{2}$ " |
| Number of strokes per minute | 85 |
| Capacity and speed of electric motor | 7 $\frac{1}{2}$ HP-720 RPM |
| Size of flywheel, dia. x face | 50" x 7" |
| Floor space overall F to B x R to L | 65" x 51" |
| Extreme height | 106" |
| Nett weight approx. | 96 cwts. |
| Shipping space approx. | 210 cub. ft. |



SPECIAL FEATURES AND ATTACHMENTS

If required the following Special Features or Attachments may be furnished at additional cost. Items so desired should be stated when ordering Press.

- Special Bolster Plate (or additional Bolster) differing from standard in regard to thickness, diameter or shape of centre hole, arrangement of Tee Slots, with extra plain or tapped holes, etc., to customer's specification.
- Pneumatic Die Cushion.
- Variable stroke Crankshaft Mechanism.

Particulars and Designs are subject to alteration without notice.



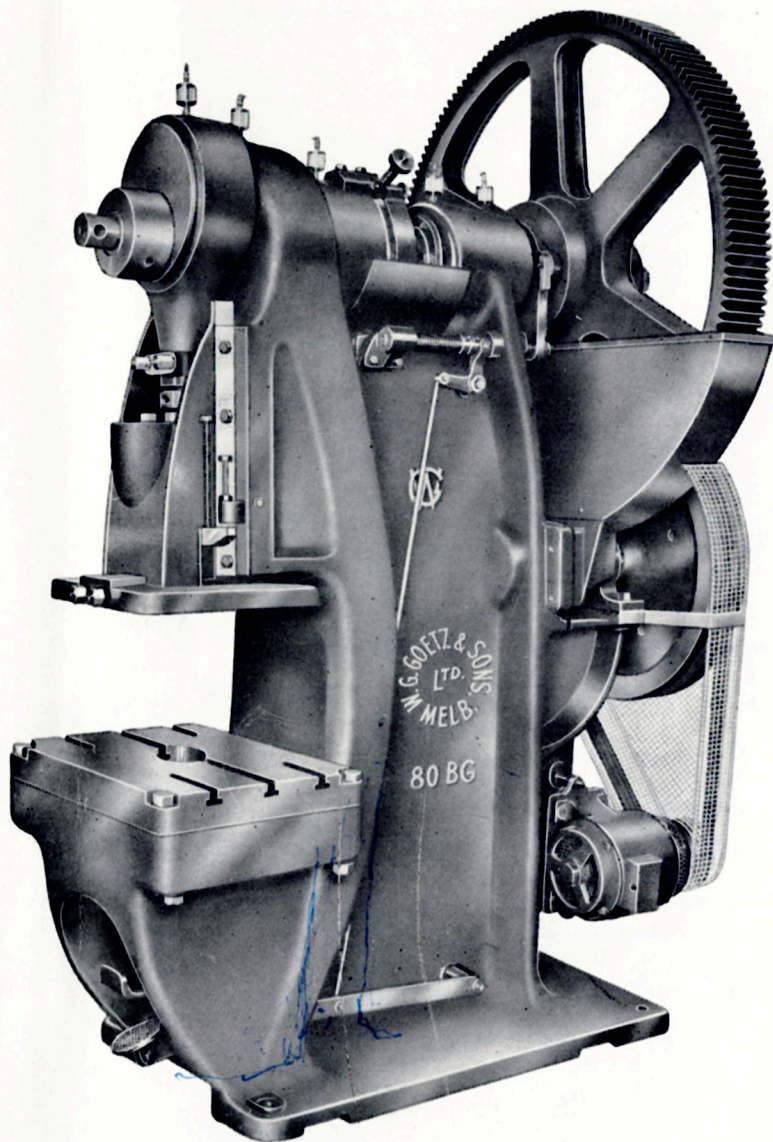
W. G. GOETZ & SONS LTD., 136-140 Hall Street, Spotswood, Melbourne.

Representatives : Sydney, Brisbane, Adelaide, Perth, New Zealand — GOLLIN & CO. LTD.

END WHEEL POWER PRESS GEARED . . . with motorised drive Open Front Type

MODEL 80 BG

Intended largely for operations in the heavier gauge metals, the press shown is furnished with geared drive which greatly facilitates heavy punching and certain types of difficult bending and forming work. The bed of the



machine is also designed with mountings to take a pneumatic die cushion, which may be supplied to order.

The heavy duty frame is a one-piece casting in best fine grained semi-steel, and is designed with proper distribution of metal for utmost rigidity and minimum deflection under full load. The crankshaft, which is of eccentric type, is machined from a high tensile steel forging, precision ground, and is supported in large diameter sleeved bearings; whilst the one-piece style connecting rod is a steel casting with phosphor bronze bushing, and incorporates a treated steel ball-end connecting screw of special buttress thread form.

All gearing is machine cut, the main gear-wheel being machined all over and phosphor bronze lined. The primary drive shaft is mounted on anti-friction bearings and the fly-wheel is fully machined, giving a smooth running drive. The electric motor is adjustably mounted at back of press, and both gearing and vee-belt drive are suitably guarded. No starter or switchgear is provided.

Extra long, accurately hand scraped gibs on slide ensure correct alignment of punch and die, and ejection is of positive bar type adjustable at front of press. The slide has a flanged base, providing generous face area for support of large tools, and is furnished with punch-holder and additional bolt holes. The removable cast bolster plate is of heavy section and has a series of machined tee-slots, allowing for secure fastening of a wide variety of dies.

Operation of press is through a three-way hardened steel clutch ring and key, providing a quick and positive action, these parts being hardness tested and ground to close tolerances. Depression and release of the treadle allows machine to make one stroke and return to top centre. A treadle guard is a standard feature.

Lubrication is of centralised type by means of a hand-operated oil pump (proprietary systems are employed) feeding main journals, connecting rod and slide gibways. Other points are provided with grease fittings.

All presses are built to Schlesinger limits of accuracy.

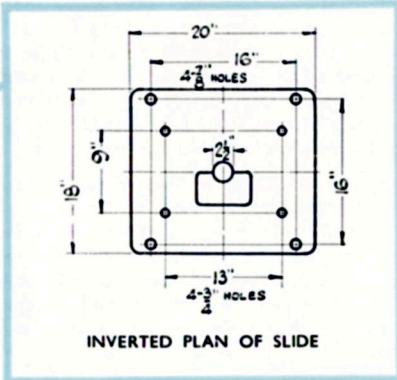
Leading dimensions overleaf.

MODEL 80BG

END WHEEL POWER PRESS GEARED . . . with motorised drive Open Front Type

SPECIFICATIONS

| | |
|---|---------------------------------------|
| Capacity—pressure exerted at bottom of stroke | 80 tons |
| Standard stroke of slide | 4" |
| Adjustment of slide | Up to 2 $\frac{3}{4}$ " |
| Die space—bolster to slide with stroke down adjustment up | 11" |
| Distance from centre of slide to frame | 10 $\frac{1}{2}$ " |
| Area of bolster plate F to B x R to L x thickness | 20" x 32" x 4" |
| Standard hole in bolster plate | 6 $\frac{1}{2}$ " dia. |
| Bore of slide for punch shanks, dia. x depth | 2 $\frac{1}{2}$ " x 2 $\frac{1}{2}$ " |
| Standard opening in bed F to B x R to L | 12" x 15" |
| Dia. of intersecting circle in bed | 14 $\frac{1}{2}$ " |
| Number of strokes per minute | 45 |
| Capacity and speed of electric motor | 7 $\frac{1}{2}$ H.P.-1450 R.P.M. |
| Size of flywheel, dia. x face | 36" x 5" |
| Speed of flywheel | 315 R.P.M. |
| Floor space overall F to B x R to L | 70" x 54" |
| Extreme height | 121" |
| Nett weight approx. | 105 cwts. |
| Shipping space approx. | 325 cub. ft. |



Particulars and Designs are subject to alteration without notice.

SPECIAL FEATURES AND ATTACHMENTS

If required the following Special Features or Attachments may be furnished at additional cost. Items so desired should be stated when ordering Press.

- Special Bolster Plate (or additional Bolster) differing from standard in regard to thickness, diameter or shape of centre hole, arrangement of Tee Slots, with extra plain or tapped holes, etc., to customer's specification.
- Pneumatic Die Cushion.
- Variable stroke Crankshaft Mechanism.

