

AUTOMATIC CAN CLOSING MACHINE

For Larger Cans up to No. 10 Size

MODEL 20P

Of compact, modern functional design the "Goetz" Model 20P Automatic Closer fulfils the need in many canneries for a versatile unit to handle moderate volume production runs.

Being a single head machine, change parts are at a minimum which reduces changeover time; important where short-run operations and frequent can size changes are carried out.

For economy reasons, parts such as Divider Blades, Lid Marker Type Holders and Embossing Type together with many other machine parts, have been made interchangeable with the complementary "Goetz" Model 18P Closing Machine.

A variable speed motor drive gives a speed range of 20-60 cans per minute closing solids or liquids, and optional extra equipment such as Steam Vacuum Closure, etc., is available.



SEAMING HEAD

The FULLY ADJUSTABLE seaming head rotates on heavy duty ball races and carries two first operation and two second operation form-ground seaming rollers running on needle roller bearings. Head adjusts for can diameters ranging 307-603, and has fine adjustment for roller setting.

FOOTPLATE

The footplate spindle is provided with a quick, simple means of adjustment for cushion spring pressure and height. As the seaming head and lid feed adjust for varying can heights, the can feed line remains unaltered; important when making frequent height changes and coupling with a Filler.

LID FEEDER AND MARKER

A simple but efficient mechanism similar to the 18P machine divides lids from the magazine stack and feeds them through the lid marker station to the seaming head. A No-Can, No-Cap device prevents covers being fed without cans. The standard lid marker embosses two rows of type with seven characters per row. A single row type holder taking up to seven characters is optionally available.

CAN FEED

The can feed is protected by a resettable overload safety-clutch and auto stop. The feed incorporates an accelerator and is normally supplied for random intake, but may also be arranged for direct coupling with a filler or syruper. Details of filler take-off should accompany an enquiry.

FILLER DRIVE

A filler drive mechanism incorporating an overload safety-clutch is available as an optional extra. Direction of drive spindle is readily reversible to suit particular filler.

STEAM VACUUM CLOSURE

Where required, the machine may also be furnished with the necessary attachment fittings for steam flow vacuum closing.

MODEL 20_P

AUTOMATIC CAN CLOSING MACHINE

For Larger Cans up to No. 10 Size

MOTOR DRIVE

A totally enclosed, fan cooled motor drives the closer through a vari-speed pulley giving an infinitely variable output of 20-60 cans per minute. The machine is fitted with an effective Automatic Brake.

AUTOMATIC STOPS

Electrical safety stops built into the lid feed, can feed and filler drive, when operated, bring the machine to a rapid halt and safeguard the closer (and filler) against damage in the event of a jam and overloading caused by entry of damaged cans, etc. **NO TIME-WASTING SHEAR PINS** are incorporated in the design.

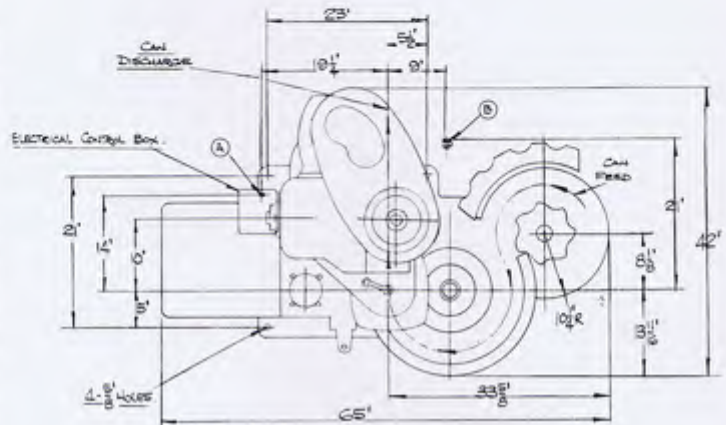
GENERAL DETAILS

Stainless steel, bronze and special alloys are used in the construction of the "Goetz" 20P Closer to resist the effects of steam and the corrosive nature of certain can products. All major castings are in high nickel alloy irons of great corrosive resistance which considerably prolong the ultimate life of the machine. Electrical equipment is of water-proof type. A differential speed in-feed table maintains an even flow of cans into the machine and virtually eliminates spill.

OPTIONAL EXTRAS

- Fittings for steam flow Vacuum Closure.
- Filler drive take-off.
- Special Height Ranges.
- Special Speed Ranges.

FLOOR PLAN



SPECIFICATIONS

Can Diameter — Maximum	603 (6 $\frac{3}{16}$ ")
— Minimum	307 (3 $\frac{7}{16}$ ")
Can Height, Standard Range — Maximum	808 (8 $\frac{1}{2}$ ")
— Minimum	208 (2 $\frac{1}{2}$ ")
Distance — Floor to feed table level	30"
Distance — Floor to filler drive shaft	11 $\frac{1}{4}$ "
Filler drive shaft (1 Rev. per can)	1 $\frac{1}{2}$ " dia.
Number of cans per minute, variable	20-60 C.P.M.
Capacity and speed of electric motor	3-H.P. 960-R.P.M.
Extreme height	65"
Nett weight approx.	20 cwts.
Shipping space approx.	180 cu. ft.

Particulars and designs are subject to alteration without notice.



W. G. GOETZ & SONS LTD., 136-140 Hall Street, Spotswood, Victoria. 3015.